



SALAHUDDIN

Rhythms of a City

SALAHUDDIN'S VENTURE INTO THE WORLD OF FINE ART AND THE continuous process of becoming an accomplished painter is devoid of any institutional training. The informal nature of his training reflects in his shy and even introvert nature. But that also gives him a certain humility essential for developing his talent. Formal training helps to develop skill and institutional knowledge but humility needs to be cultivated for becoming successful and to Salahuddin it appears to come naturally. This characteristic humility induces him to select subjects that come easily, almost inevitably to him. Institutions often have a stifling effect by cultivating reasons and methods into the process of learning. By being exclusive from this, Salahuddin shows immense possibilities.

Salahuddin's third solo painting exhibition is exclusively devoted to the joys and pangs of city life. The mundane matters of daily existence in the city are brought into the lime light with particular ease and loving care.

His particular concern is with the old part of the city where buildings and lives are falling apart. But he believes the old city is a treasure trove of memories and ways of life that if allowed to become extinct by the onslaught of modernism will leave us empty and ruined. The works in the exhibition reflects this realization and that inner vision is far more powerful and revealing than the surface of his works.

His creativity comes from this deeper realization and the ability to portray it truthfully. The joy it brings to the viewers is not only esthetic but rather the joy of finding the truth that lies deep down. Salahuddin believes in these things and that is why despite being a student of international relations he has committed himself more and more to artistic pursuits.

The path that lies ahead of Salahuddin is long and difficult. I hope that the adversities he will encounter will not be able to dissuade him. My best wishes and congratulations to him.

Shishir Bhattacharjee

Lecturer

Institute of Fine Art

Dhaka University

Translated by : Muhammed Enayet Mowla



HOUSE OF CARDS - 1

Oil Colour

Cover Painting : " Moonlight Magic " Oil Colour

SOLO PAINTING EXHIBITION
Rhythms of a City

18th July to 24th July '94



CITY OF MEMORIES - 4

Oil Colour

Courtesy :
K. Shafi & Company. 122, Ramna, Dhaka.



CITY OF MEMORIES - 5

Oil Colour



NOWHERE TO TURN

Oil Colour



HOUSE OF CARDS - 3

Oil Colour



THE INTRUDER

Oil Colour



SCORCHED CITY

Oil Colour

Courtesy :

K-Shafi Bakery. 3/2 , Chittra Ranjon Ave.

Kazi Salahuddin Ahmed

Born : 13th Sept. 1963, Dhaka.

Education :

- 1986 - M.S.S. International Relations, Dhaka University.
- 1988 - B.S.S. International Relations, Dhaka University.
- 1989 - Art History and Art Appreciation course, Shilpakala Academy.

Solo Exhibition :

- 1994 - La - Galerie, Dhaka. Bangladesh.
- 1993 - Gallere de Alliance Francaise. Dhaka. Bangladesh.
- 1987 - T.S.C. Dhaka University.

Group Exhibition :

- 1994 - 10th Young Artists Art Exhibition, at Shilpakala Academy, Dhaka, Bangladesh.
- 1993 - 1st Tone National Miniature Art Competetion, Dhaka.
- 1992 - 93 - "Grand Group Exhibition of Reputed Bangladeshi Artists" at Saju Art Gallery, Dhaka.
- 1993 - 6th Asian Art Biennale, Bangladesh.
- 1993 - 15th Montana Miniature Art Society International show, USA.
- 1993 - Georgia Miniature Arts Society Exhibition, USA.
- 1992 - 10th National Art Exhibition at Shilpakala Academy
- 1988 - "8th Young Artists Art Exhibition" at Shilpakala Academy, Dhaka, Bangladesh.
- 1987 - Victory Day Art Exhibition at Shilpakala Academy.

Collections : Hotel Sheraton, Hotel Sonargaon and many private Collections in Home & Abroad

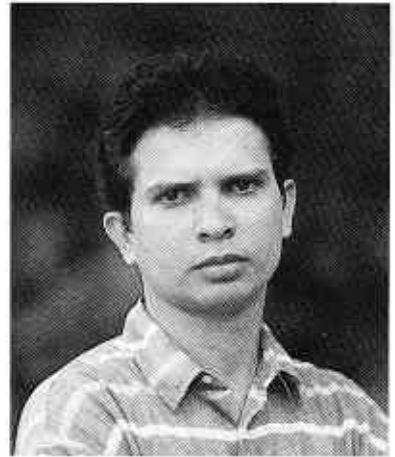
Present Position : Free-Lance Artist.

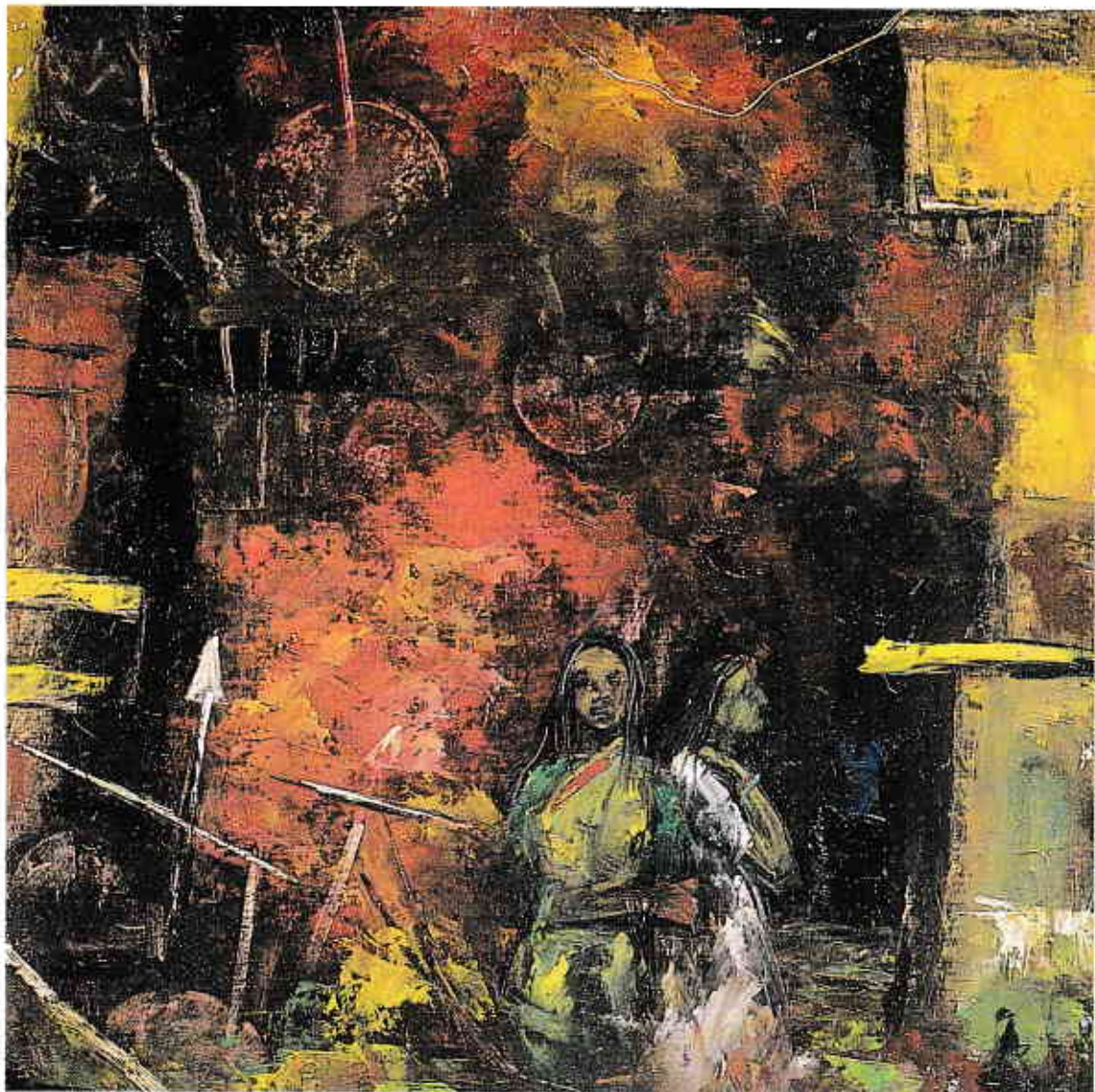
Member Montana Miniature Art Society.

Administrator, "K. Shafi & Compony."

Present Address/Studio :

42, Ruplaladas Lane, Shambazar, Dhaka-1100. Tel : 236474.





THE OUTCASTS

Oil Colour



La Galerie 54, kemal Ataturk Avenue, 4th floor, Banani C/A, Dhaka-1213

Printed by
Orchid Printers

Photography & Design by
Hossain Shahid Echo